



1 LOCATION PLAN
1:3000

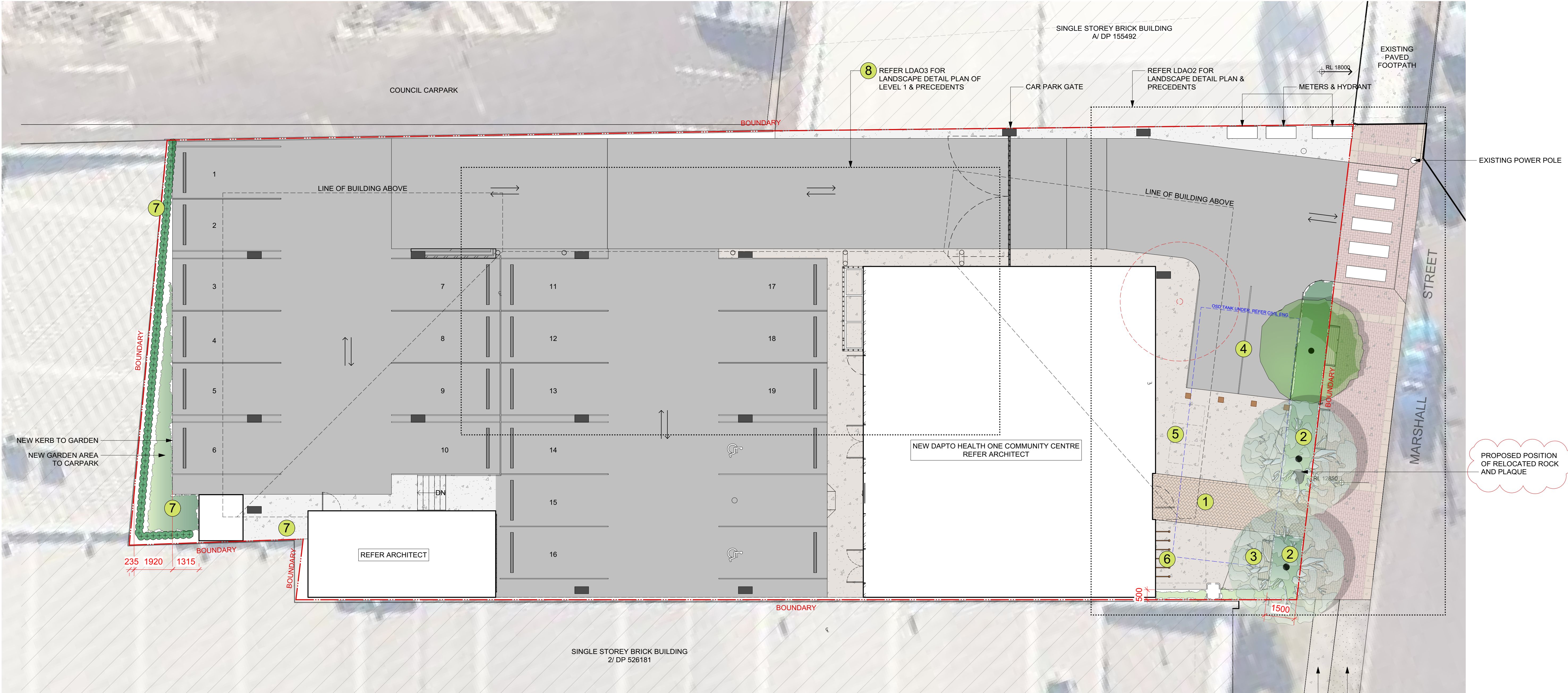
LANDSCAPE DRAWING SCHEDULE			
DWG. No.	TITLE	SCALE	ISSUE
NBRS-L-DA-00	COVER PAGE	1:3000 @ A1	F
NBRS-L-DA-01	LANDSCAPE SITE PLAN	1:100 @ A1	F
NBRS-L-DA-02	LANDSCAPE DETAIL PLAN & PRECEDENTS - GROUND FLOOR	1:50 @ A1	F
NBRS-L-DA-03	LANDSCAPE PLAN PRECEDENTS - LEVEL ONE TERRACE	1:50 @ A1	E
NBRS-L-DA-04	PLANTING PLAN - GROUND FLOOR	1:50 @ A1	F
NBRS-L-DA-05	PLANTING PLAN - LEVEL ONE TERRACE	1:50 @ A1	E
NBRS-L-DA-06	PLANTING PALETTE & SCHEDULE	AS SHOWN @ A1	E
NBRS-L-DA-07	LANDSCAPE DETAILS	AS SHOWN @ A1	E



LANDSCAPE DEVELOPMENT APPLICATION

DAPTO HEALTH ONE | WOLLONGONG CITY COUNCIL

4 MARSHALL STREET, DAPTO NSW



1 LANDSCAPE SITE PLAN
1:100

KEY

- | | |
|---|---|
| 1. ENTRY FORECOURT
- FEATURE PAVING IDENTIFYING ENTRY PATH | 5. MOBILITY SCOOTER PARKING (1.5x1M)
- COLOURED CONCRETE ZONE
- PARKING FOR 3-4 VEHICLES UNDER COVER |
| 2. LANDSCAPE BUFFER
- MINIMUM 1.5M LANDSCAPE BUFFER FROM STREET
- REVITALISED MARSHALL STREET FRONTAGE WITH NEW FEATURE STREET TREES (LAGERSTROEMIA INDICA 'NATCHEZ')
- FEATURE TREES UNDERPLANTED WITH MASS SHRUBS & GROUNDCOVERS | 6. BIKE PARKING (4x3.2M)
- WALL MOUNTED STANDS TO BUILDING WALL |
| 3. MEMORIAL SEATING
- OPEN SEATING AREA
- EXISTING MEMORIAL PLACQUE FROM SITE TO BE FIXED TO NEW BENCH SEAT | 7. CARPARK PLANTING
- DENSE NATIVE SCREEN PLANTING TO WESTERN BOUNDARY OF CARPARK TO PROVIDE SOFTENING OF NEIGHBOURING FACADES |
| 4. LOADING ZONE (5.2x6.4M)
- DROP OFF & DELIVERY ZONE | 8. LEVEL 1 TERRACE |

Issue No.	Date	Description	Chkd
A	14/12/2018	DA FOR REVIEW	AS
B	18/02/2019	DA ISSUE	AS
C	11/03/2019	DA REVISION	AS
D	15/03/2019	DA REVISION	AS
E	29/07/2019	DA REVISION	AS
F	08/08/2019	DA REVISION	AS
G	11/10/2019	DA REVISION	CB

Legend

	BOUNDARY LINE		PROPOSED MASS SHRUBS, GROUNDCOVERS & CLIMBERS		PROPOSED COLOURED CONCRETE
	EXISTING TREE TO BE REMOVED		PROPOSED NEW TURF AREA		NEW FOOTPATH PAVEMENT TO COUNCIL'S STREETSCAPE DESIGN STRATEGY
	PROPOSED FEATURE TREES		PROPOSED FEATURE HERRINGBONE PAVING		

Drawing Title

LANDSCAPE SITE PLAN

Project

DAPTO HEALTH ONE

at

4 MARSHALL ST,
DAPTO, NSW 2530
E: architects@nbsarchitecture.com W: nbsarchitecture.com
ILLAWARRA SHOALHAVEN LOCAL HEALTH DISTRICT

Landscape Architect

NBR
ARCHITECTURE.
LANDSCAPE

Level 3, 4 Glen Street, Milsoms Point, NSW 2061 Australia
T: 61 2 9922 2344 F: 61 2 9922 1308
E: architects@nbsarchitecture.com W: nbsarchitecture.com

Any form of replication of this drawing in full or in part without the written permission of NBS & PARTNERS Pty Ltd constitutes an infringement of the copyright
ABN 16 002 247 565 © 2018

Date 11/10/2019

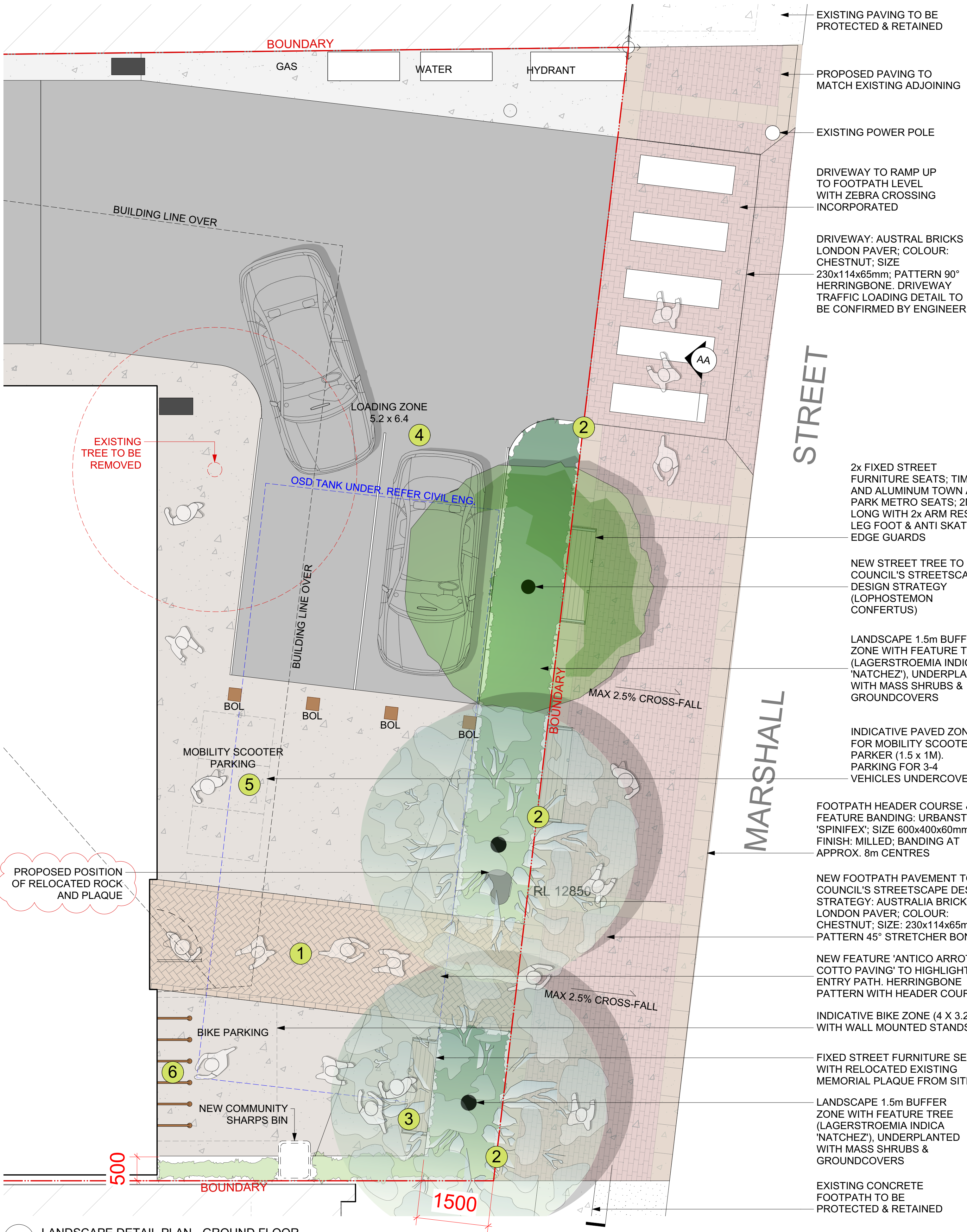
Scale 1:100@A1 or 1:200@A3

0 1 2 3 4 5 6m

Project No. Sheet No. Revision No.

18192 L-DA-01

G



1 LANDSCAPE DETAIL PLAN - GROUND FLOOR
1:50

Issue No.	Date	Description	Chkd
A	14/12/2018	DA FOR REVIEW	AS
B	18/02/2019	DA ISSUE	AS
C	11/03/2019	DA REVISION	AS
D	15/03/2019	DA REVISION	AS
E	15/03/2019	DA REVISION	AS
F	08/08/2019	DA REVISION	AS
G	11/10/2019	DA REVISION	CB

Legend

--- BOUNDARY LINE	PROPOSED MASS SHRUBS, GROUNDCOVERS & CLIMBERS	PROPOSED COLOURED CONCRETE
● EXISTING TREE TO BE REMOVED	PROPOSED NEW TURF AREA	NEW FOOTPATH PAVEMENT TO COUNCIL'S STREETSCAPE DESIGN STRATEGY
● PROPOSED FEATURE TREES	PROPOSED FEATURE HERRINGBONE PAVING	

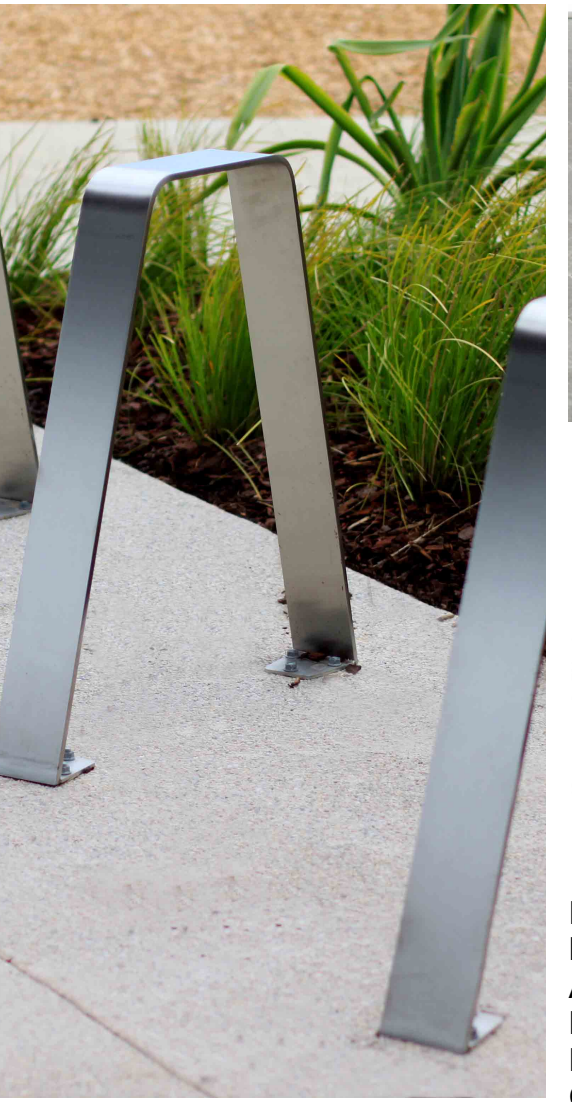
MATERIALS & FINISHES



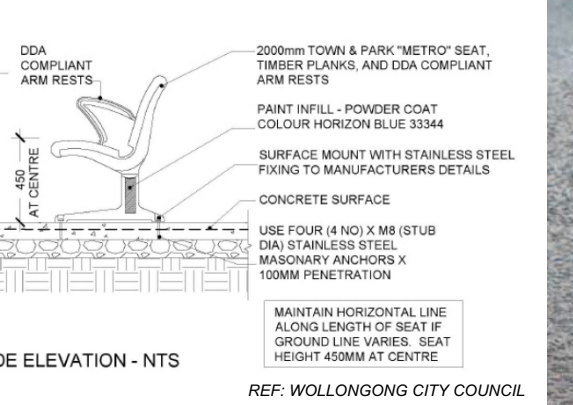
'ANTICO ARROTATO COTTO PAVING'
BY ECO OUTDOOR OR APPROVED EQ.



'WALNUT' COLOURED CONCRETE
BY COLOURED CONCRETE SYSTEMS AUSTRALIA OR APPROVED EQ.



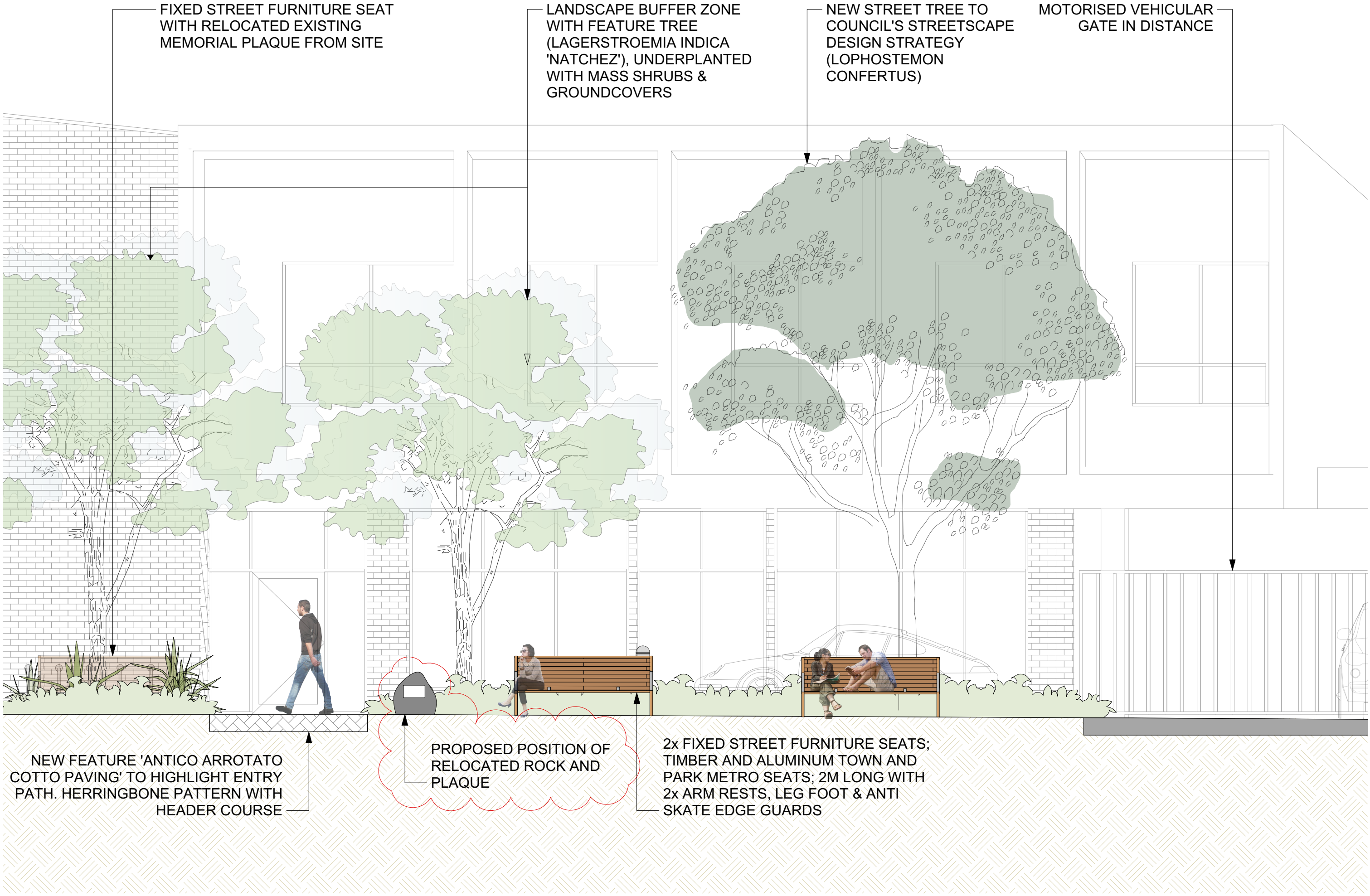
MANHATTAN BIKE LEANING RAIL
BY COMMERCIAL SYSTEMS AUSTRALIA OR APPROVED EQ.



FIXED SEAT 'TOWN AND PARK METRO SEAT' - WITH CAST ALUMINIUM FRAME, LEG, FOOT, POLISHED ARM RESTS (x2) AND EDGE GUARDS (x2). OILED FSC CERTIFIED HARDWOOD 40x30mm TIMBER PLANKS



URBANIA BOLLARD
BY COMMERCIAL SYSTEMS AUSTRALIA OR APPROVED EQ.



2 ELEVATION AA
1:50

Drawing Title
LANDSCAPE DETAIL PLAN
GROUND FLOOR

Project
DAPTO HEALTH ONE

at
4 MARSHALL ST.
DAPTO, NSW 2530
for
ILLAWARRA SHOALHAVEN LOCAL HEALTH DISTRICT

Landscape Architect
NBR ARCHITECTURE.
LANDSCAPE

Level 3, 4 Glen Street, Milsoms Point, NSW 2061 Australia
T: 61 2 9922 2344 F: 61 2 9922 1308
E: architects@nbrsarchitecture.com W: nbrsarchitecture.com

Any form of replication of this drawing in full or in part without the written permission of NBR & PARTNERS Pty Ltd constitutes an infringement of the copyright
ABN 16 002 247 565 © 2018

Date 11/10/2019
Scale 1:50@A1 or 1:100@A3
0 0.5 1 1.5 2 2.5 3m

Project No. 18192 Sheet No. L-DA-02 Revision No. G

MATERIALS & FINISHES



TIMBER BUILT-IN SEAT WITH PLANTER BEHIND

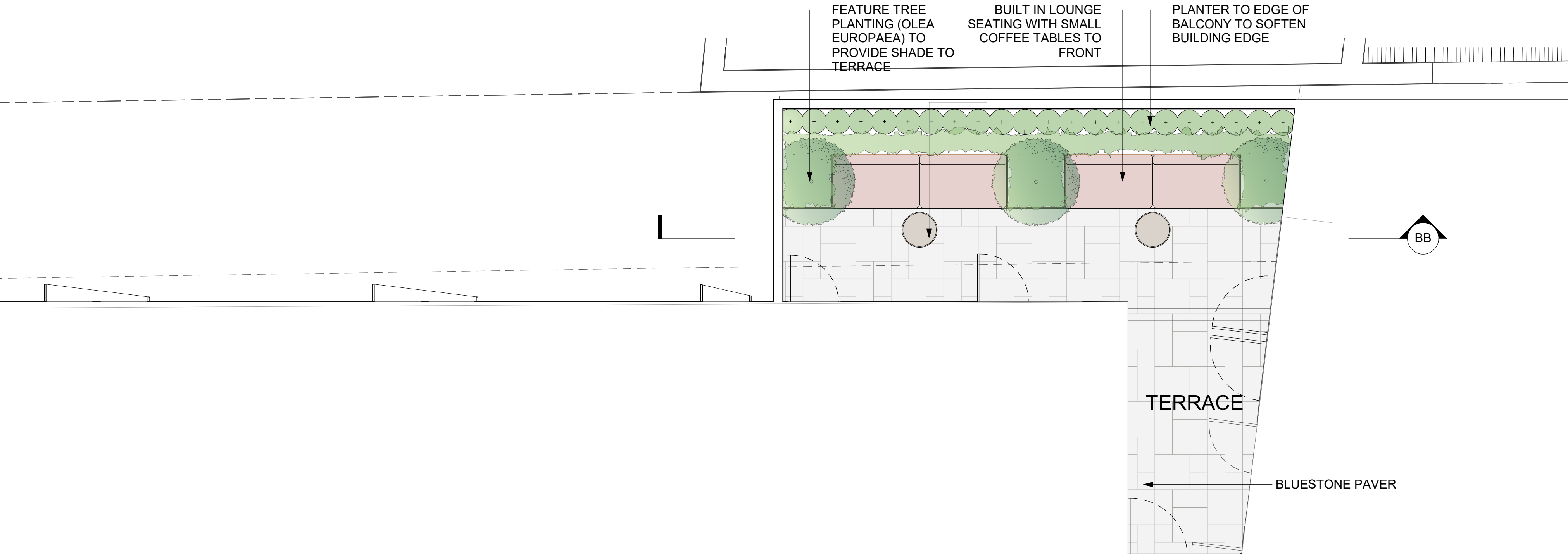


BLUESTONE PAVING TILES



FEATURE OLEA EUROPAEA TREES IN PLANTERS

LEVEL 1 - REFER ARCHITECT



1 LANDSCAPE PLAN - LVL 1 TERRACE
1:50



2 ELEVATION BB
1:20

Issue No.	Date	Description	Chkd
A	14/12/2018	DA FOR REVIEW	AS
B	18/02/2019	DA ISSUE	AS
C	11/03/2019	DA REVISION	AS
D	15/03/2019	DA REVISION	AS
E	29/07/2019	DA REVISION	AS

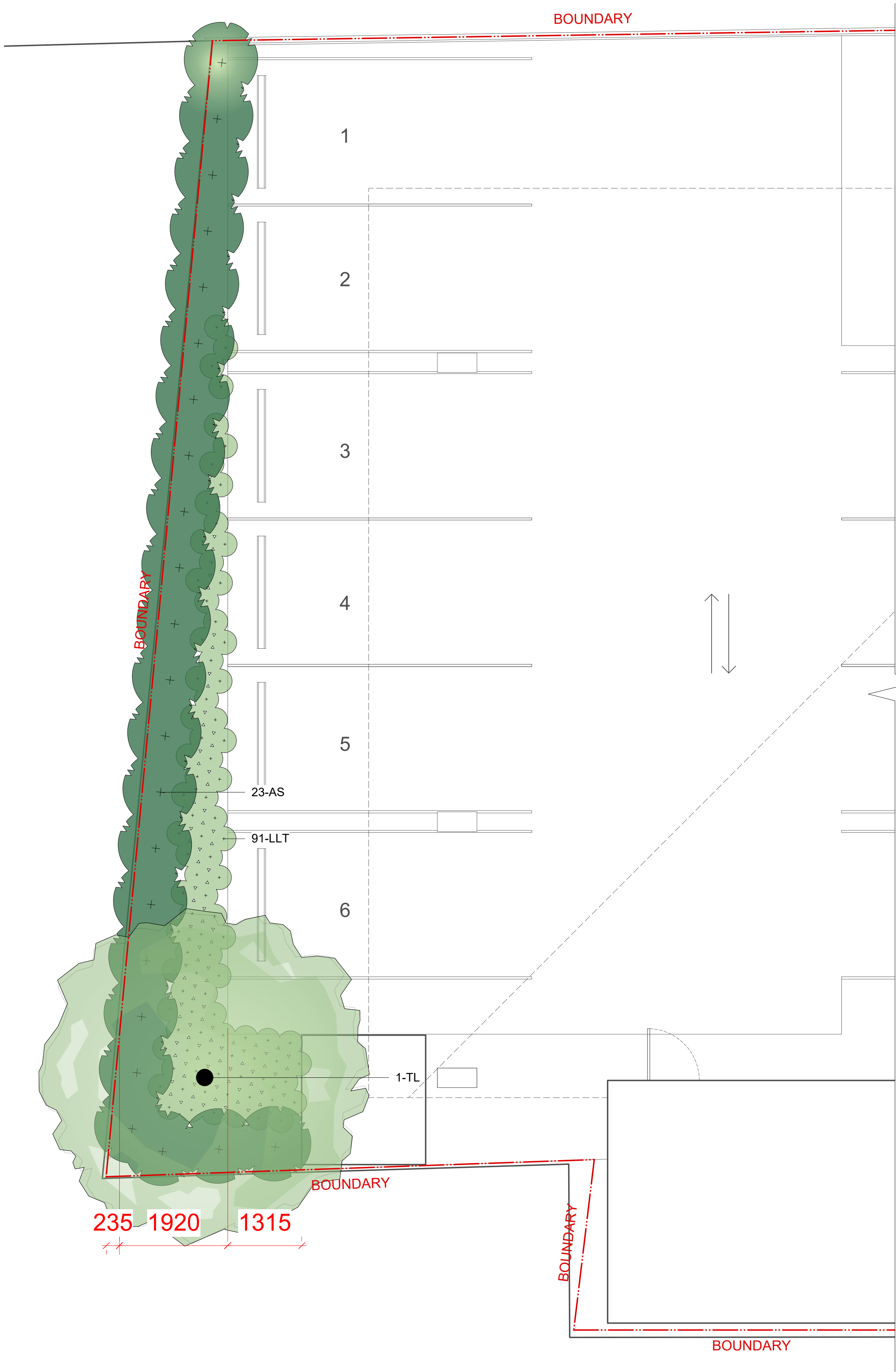
Drawing Title
LANDSCAPE PLAN
LEVEL ONE TERRACE

Project
DAPTO HEALTH ONE

at
4 MARSHALL ST,
DAPTO, NSW 2530
for
ILLAWARRA SHOALHAVEN LOCAL HEALTH DISTRICT

Landscape Architect
NBR
SARCHITECTURE.
LANDSCAPE
Level 3, 4 Glen Street, Milsons Point, NSW 2061 Australia
T: 61 2 9922 2344 F: 61 2 9922 1308
E: architects@nbsarchitecture.com W: nbsarchitecture.com
Any form of replication of this drawing in full or in part without the written permission
of NBS & PARTNERS Pty Ltd constitutes an infringement of the copyright
ABN 16 002 247 565 © 2018

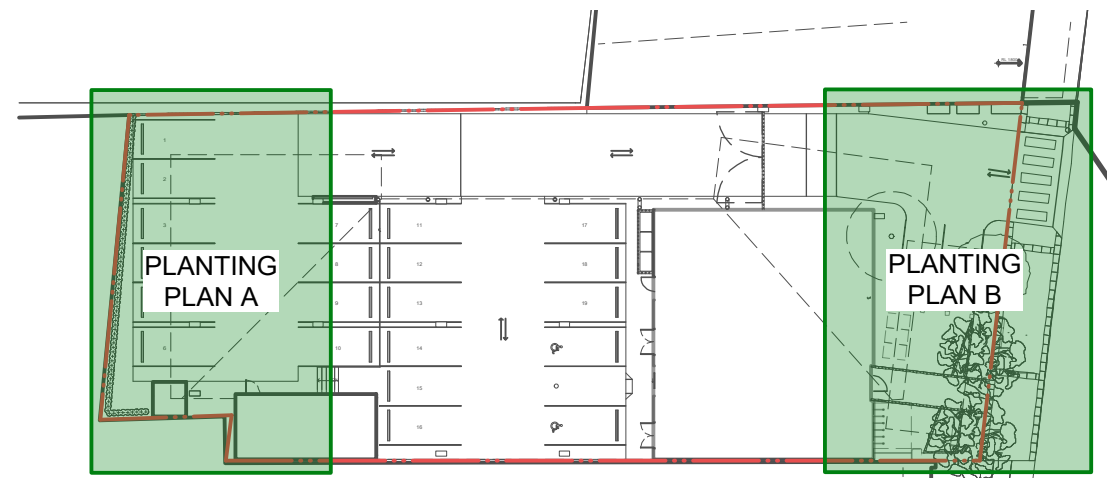
Date 29/07/2019
Scale 1:50@A1 or 1:100@A3
0 0.5 1 1.5 2 2.5 3m
Project No. 18192 Sheet No. L-DA-03 Revision No. E



1 PLANTING PLAN A - GROUND FLOOR
1:50



2 PLANTING PLAN B - GROUND FLOOR
1:50



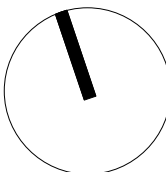
3 LANDSCAPE KEY PLAN
1:500

Issue No.	Date	Description	Chkd
A	14/12/2018	DA FOR REVIEW	AS
B	18/02/2019	DA ISSUE	AS
C	11/03/2019	DA REVISION	AS
D	15/03/2019	DA REVISION	AS
E	29/07/2019	DA REVISION	AS
F	08/08/2019	DA REVISION	AS

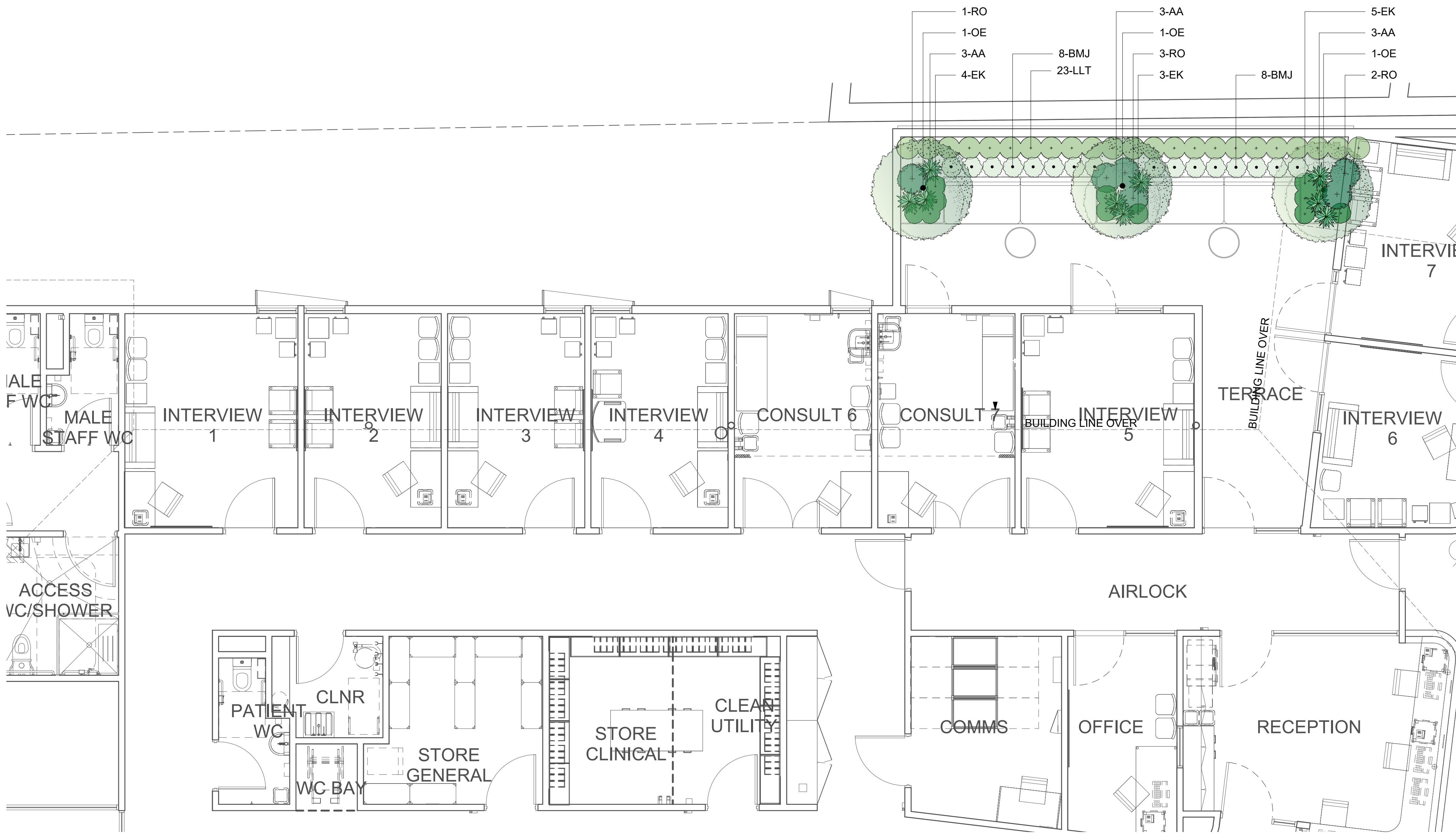
Drawing Title
PLANTING PLAN
GROUND FLOOR

Project
DAPTO HEALTH ONE
at
4 MARSHALL ST,
DAPTO, NSW 2530
E: architects@nbrsarchitecture.com W: nbrsarchitecture.com
for
ILLAWARRA SHOALHAVEN LOCAL HEALTH DISTRICT

Landscape Architect
NBR
SARCHITECTURE.
LANDSCAPE
Level 3, 4 Glen Street, Milsoms Point, NSW 2061 Australia
T: 61 2 9922 2344 F: 61 2 9922 1308
E: architects@nbrsarchitecture.com W: nbrsarchitecture.com
Any form of replication of this drawing in full or in part without the written permission
of NBR & PARTNERS Pty Ltd constitutes an infringement of the copyright
ABN 16 002 247 565 © 2018



Date 08/08/2019
Scale 1:50@A1 or 1:100@A3
0 0.5 1 1.5 2 2.5 3m
Project No. 18192 Sheet No. L-DA-04 Revision No. F



1 PLANTING PLAN - LEVEL ONE TERRACE
1:50

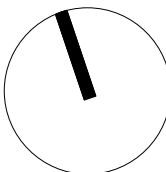
Issue				Chkd
No.	Date	Description		
A	14/12/2018	DA FOR REVIEW	AS	
B	18/02/2019	DA ISSUE	AS	
C	11/03/2019	DA REVISION	AS	
D	15/03/2019	DA REVISION	AS	
E	29/07/2019	DA REVISION	AS	

Drawing Title
PLANTING PLAN
LEVEL ONE TERRACE

Project
DAPTO HEALTH ONE

at
4 MARSHALL ST.
DAPTO, NSW 2530
for
ILLAWARRA SHOALHAVEN LOCAL HEALTH DISTRICT

Landscape Architect
NBR
ARCHITECTURE.
LANDSCAPE
Level 3, 4 Glen Street, Milsoms Point. NSW 2061 Australia
T: 61 2 9922 2344 F: 61 2 9922 1308
E: architects@nbrsarchitecture.com W: nbrsarchitecture.com
Any form of replication of this drawing in full or in part without the written permission of NBR & PARTNERS Pty Ltd constitutes an infringement of the copyright
ABN 16 002 247 565 © 2018



Date 29/07/2019
Scale 1:50@A1 or 1:100@A3
0 0.5 1 1.5 2 2.5 3m
Project No. 18192 Sheet No. L-DA-05 Revision No. E

GROUND FLOOR PLANTING PALETTE

TREES



LAGERSTROEMIA INDICA X L.FAURIEI 'NATCHEZ.'



LOPHOSTEMON CONFERTUS



TRISTANIOPSIS LAURINA 'LUSCIOUS'

SHRUBS



ACMENA SMITHII 'SUBLIME'



CORREA ALBA



ROSMARINUS OFFICINALIS



WESTRINGIA FRUTICOSA 'WYNABBI GEM'

GRASSES / STRAPPY



ALOE ARBORESCENS



LOMANDRA LONGIFOLIA 'TANIKA'

GROUNDCOVER



CASUARINA GLAUCA 'COUSIN IT'

LEVEL ONE TERRACE PLANTING PALETTE

TREES



OLEA EUROPAEA

SHRUBS



BUXUS MICROPHYLLA 'JAPONICA'



ROSMARINUS OFFICINALIS

GRASSES / STRAPPY



ALOE ARBORESCENS



LOMANDRA LONGIFOLIA 'TANIKA'

GROUNDCOVER



ERIGERON KARVINSKIANUS

PLANTING SCHEDULE

ID	Qty	Botanical Name	Common Name	Scheduled Size	Mature Height	Mature Spread	Remarks
Trees							
LI	2	Lagerstroemia indica x L.fauriei 'Natchez'	Crepe Myrtle 'White'	200LT	8000mm	6000mm	
LC	1	Lophostemon confertus	Brush Box	200LT	15000mm	10000mm	Illawarra Local Native Species
OE	3	Olea europaea	European Olive	200LT	>7000mm	>7000mm	
TL	1	Tristaniopsis laurina 'Luscious'	Luscious Water Gum	200LT	8000mm	5000mm	Illawarra Local Native Species
Shrubs							
AS	23	Acmena smithii 'Sublime'	Sublime Lilly Pilly	45LT	5000mm	3000mm	Illawarra Local Native Species
BMJ	16	Buxus microphylla 'Japonica'	Japanese Box	200MM	300mm	300mm	
CA	21	Correa alba	White Correa	200MM	1000mm	1000mm	Illawarra Local Native Species
RO	20	Rosmarinus officinalis	Rosemary	200MM	1000mm	700mm	
SA	8	Syzygium australe 'Pinnacle'	Pinnacle Lilly Pilly	45LT	6000mm	1000mm	
WF	9	Westringia fruticosa 'Wynabbi Gem'	Coastal Rosemary	200MM	1000mm	1000mm	Illawarra Local Native Species
Groundcovers / Climbers							
CG	19	Casuarina glauca 'Cousin It'	Cousin It	200MM	100mm	1000mm	Illawarra Local Native Species
EK	87	Erigeron karvinskianus	Seaside Daisy	140MM	300mm	500mm	
Grasses / Strappy							
AA	36	Aloe arborescens	Candelabra Aloe	200MM	500mm	1000mm	
LLT	192	Lomandra longifolia 'Tanika'	Mat Rush Tanika	200MM	500mm	600mm	Illawarra Local Native Species
Total	438						

Issue No.	Date	Description	Chkd
A	14/12/2018	DA FOR REVIEW	AS
B	18/02/2019	DA ISSUE	AS
C	11/03/2019	DA REVISION	AS
D	15/03/2019	DA REVISION	AS
E	29/07/2019	DA REVISION	AS

Drawing Title
PLANTING PALETTE & SCHEDULE

Project
DAPTO HEALTH ONE

at
4 MARSHALL ST,
DAPTO, NSW 2530
E: architects@nbsarchitecture.com W: nbsarchitecture.com
ILLAWARRA SHOALHAVEN LOCAL HEALTH DISTRICT

Landscape Architect
NBRSLANDSCAPEARCHITECTURE.
Level 3, 4 Glen Street, Milsoms Point. NSW 2061 Australia
T: 61 2 9922 2344 F: 61 2 9922 1308
E: architects@nbsarchitecture.com W: nbsarchitecture.com
Any form of replication of this drawing in full or in part without the written permission of NBS & PARTNERS Pty Ltd constitutes an infringement of the copyright
ABN 16 002 247 565 © 2018

Date 29/07/2019
Scale N/A
0
Project No. Sheet No. Revision No.
18192 L-DA-06 E